



RANK: ENVIRONMENT – 1, OVERALL – 1

**PROJECT DESCRIPTION**

The Eleven Mile Creek Stream Restoration project will mitigate coastal flooding, protect valuable public infrastructure, repair existing nonfunctional stormwater infrastructure, restore natural resources, and improve water quality in Eleven Mile Creek and Perdido Bay.

Eleven Mile Creek is a 303(d) listed impaired water body and Total Maximum Daily Loads (TMDLs) exist for fecal coliform bacteria, low dissolved oxygen, excess nutrients, elevated biological oxygen demand, and unionized ammonia. Water quality improvements are necessary to meet water quality standards for Class III water to be considered “fishable and swimmable” .

The project will provide flood protection for Bristol Park, Bristol Creek, and Ashbury Hills neighborhoods and surrounding areas by restoring and expanding the floodplain, restoration of wetlands, reduction in invasive species, and reestablishment of riparian buffers.

**PROJECT DETAILS**

**Phase 1 (MYIP activities) - \$1,110,776**  
*Planning & Design for Stream Restoration & Floodplain Expansion*

- Community/stakeholder Input
- Pre-design Water Quality/Habitat Monitoring
- Watershed Assessments
- Easement Determination & Land Acquisition (27 HMGP Properties)
- Wetland Delineation & Permitting
- Wetland & Stream Restoration Design

**Future Phases - \$11,819,133**  
*Implementation & Construction*

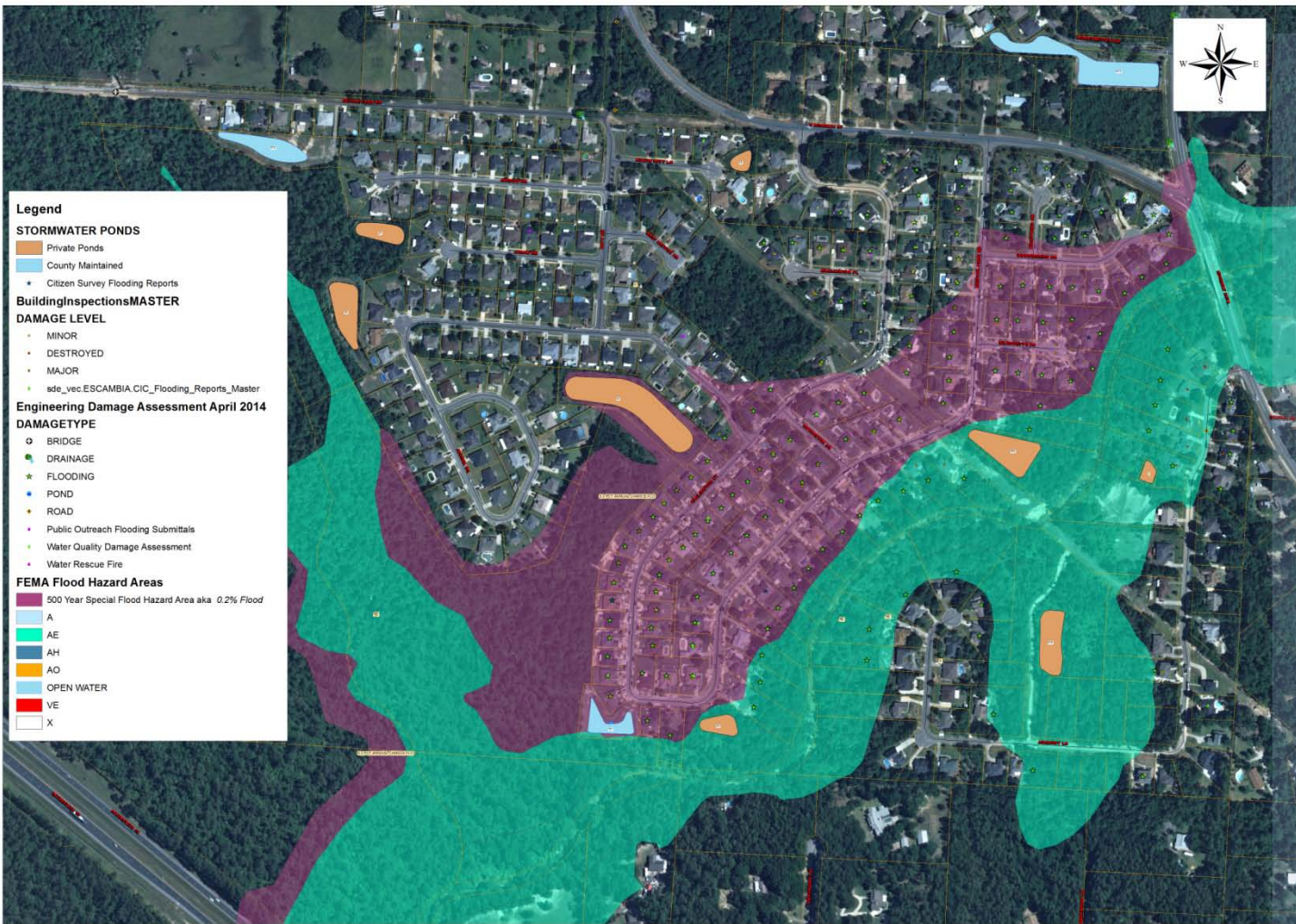
- 3,500 linear ft. Stream Restoration
- 40 acres Floodplain Expansion
- Protect 160 Homes

**Total Project Cost:** \$12,929,909

**Leverage:** \$6,235,620 (HMGP Grant & LOST)

**Primary Eligible Activity:** Planning Assistance





0 187.5 375 750 1,125 1,500 Feet

Date of Photography - May 2014

**Project Benefits**

- 3,500 linear ft. Stream Restoration
- 40 acres Floodplain Expansion
- Protect 160 Homes from Flooding
- Riparian Zone Restoration/Preservation
- Increase Community Resilience
- Expanding Wildlife Corridor
- Improve Water Quality/ Increase Dissolved Oxygen/ Begin Addressing TMDL
- Stormwater Runoff Treatment/ Reduction
- Supports and Creates Jobs

**Eleven Mile Creek Impairments**

- Sedimentation
- Nutrients
- Impaired Waters: Fecal Coliform TMDL- Bacterial Pollution Control Plan
- Habitat Loss
- Low Dissolved Oxygen

