

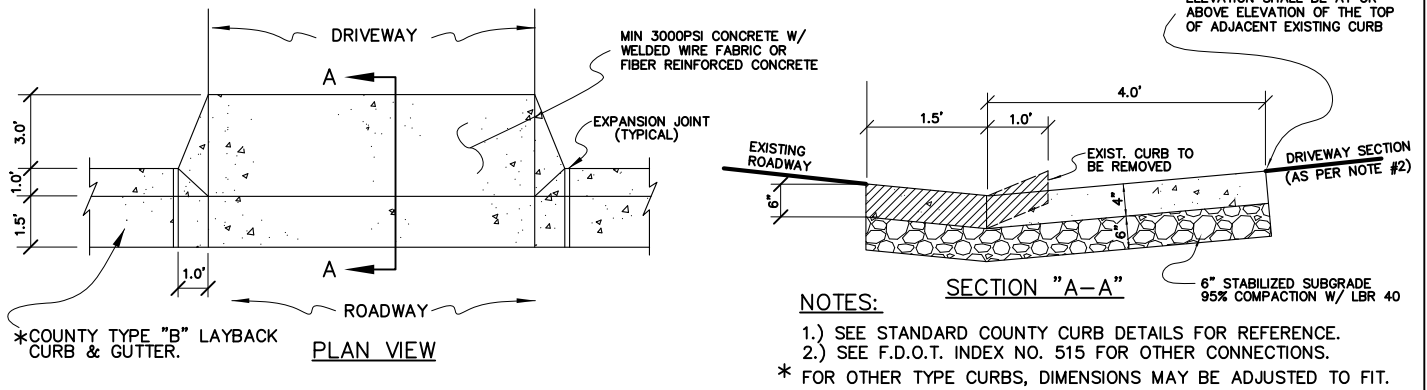
TYPICAL DRIVEWAY CONNECTION STANDARDS FOR EXISTING ROADWAY CONDITIONS



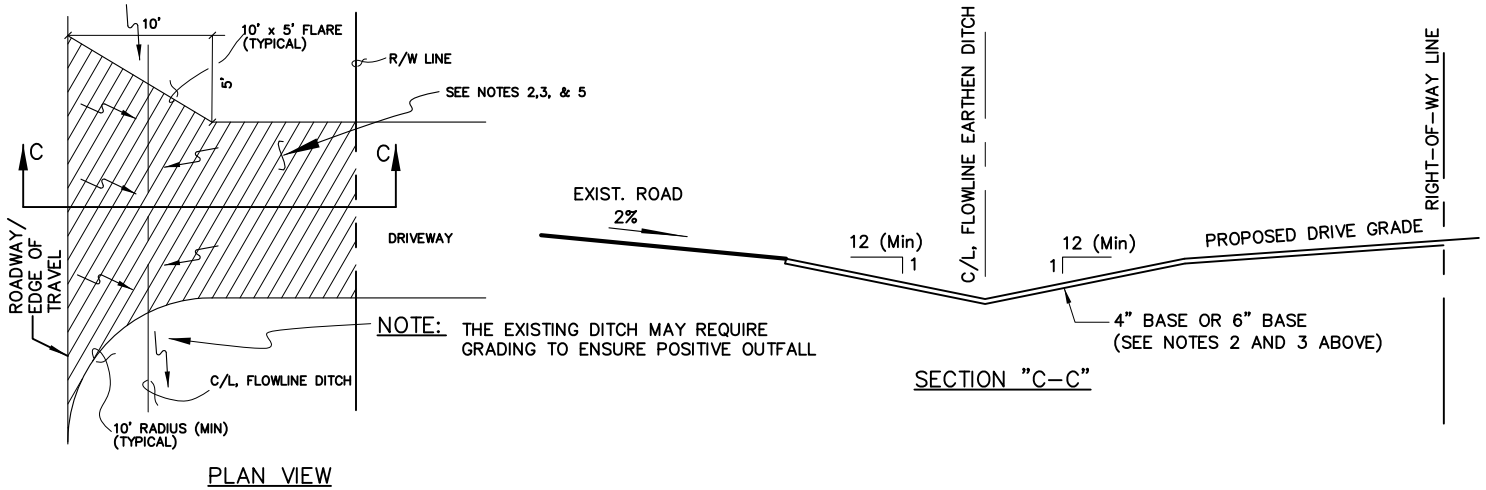
NOTES:

1. ALL MATERIALS AND LABOR FOR INSTALLATION WILL BE THE RESPONSIBILITY OF THE PROPERTY OWNER.
2. DRIVEWAYS ABUTTING PAVED ROADS SHALL BE 1-1/2" ASPHALT WITH 6" STABILIZED SUBGRADE OR 4" TO 6" CONCRETE WITH 4" STABILIZED SUBGRADE ~ 95% COMPACTION (MODIFIED PROCTOR) WITH LBR 40 BETWEEN EDGE OF ROADWAY AND R/W LINE.
3. DRIVEWAYS ABUTTING A DIRT ROAD SHALL BE MILLED ASPHALT, GRADED AGGREGATE BASE, OR WASHED CONCRETE (4" IN DEPTH) ON THE COUNTY MAINTAINED PORTION OF DRIVEWAY.
4. IF NECESSARY, REFER TO F.D.O.T. INDEX DETAILS AS REFERENCED BELOW.
5. RADIUS OR FLARE IS ACCEPTABLE FOR TYPE II OR TYPE III CONNECTIONS.
6. DRIVEWAYS WITHIN PROPERTY BOUNDARY SHALL PROVIDE A MINIMUM OF 2 PARKING SPACES.
7. TYPICAL DRIVEWAY SECTIONS ARE TO BE 12' WIDE MINIMUM.

TYPE I CURB CUT DRIVEWAY FOR COUNTY TYPE "B" LAYBACK CURBS.

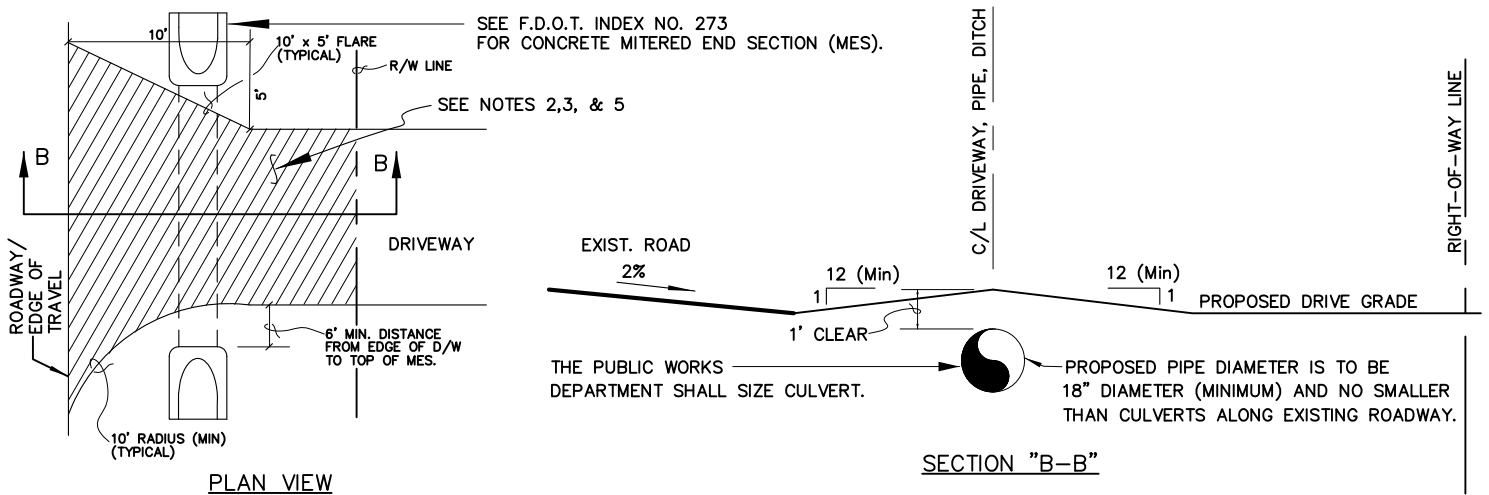


TYPE II DIPPED DRIVEWAY WITHOUT CROSS PIPE (CULVERT)



TYPE III-A CROSS PIPE (CULVERT) DRIVEWAY

NOTE: TYPE III-B DRIVEWAY W/ CONCRETE OR SANDBAG HEADWALLS MAY BE USED IN SPECIAL CASES AS APPROVED BY THE PUBLIC WORKS / DEVELOPMENT REVIEW DEPARTMENT.

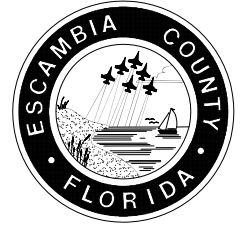


TYPE IV SPECIAL DRIVEWAY CONNECTION

TYPE IV-A REQUIRES A F.D.O.T. CONNECTION PERMIT (PROVIDE APPROVED F.D.O.T. PERMIT TO OBTAIN COUNTY APPROVAL). REFER TO INDEX NO. 515 AND CONTACT F.D.O.T. AT (850) 981-3000. MAY REQUIRE PLANS PREPARED BY A FLORIDA REGISTERED PROFESSIONAL ENGINEER (P.E.).

TYPE IV-B SPECIAL INNOVATIVE CONNECTION AS DESIGNED BY A FLORIDA REGISTERED PROFESSIONAL ENGINEER (P.E.) AND AS APPROVED BY THE APPROPRIATE PUBLIC WORKS / DEVELOPMENT REVIEW STAFF. ATTACH PLAN FOR REVIEW.

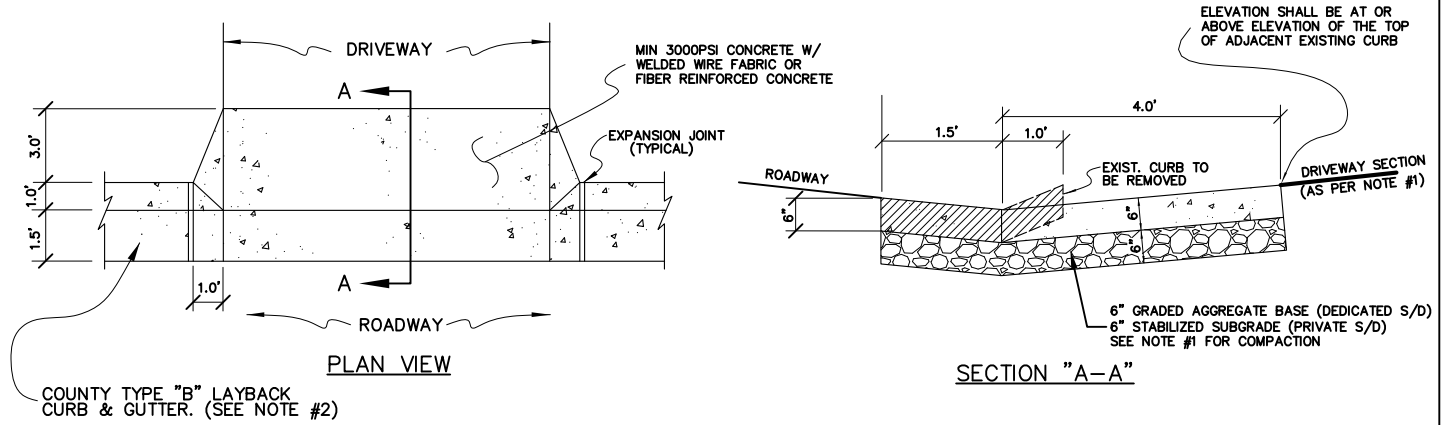
TYPICAL DRIVEWAY CONNECTION STANDARDS FOR NEW SUBDIVISION (CURB & GUTTER) ROADWAY CONDITIONS



NOTES:

1. DRIVEWAY SECTIONS ABUTTING CURB OR CURB CUT SHALL BE 6" CONCRETE WITH 6" STABILIZED SUBGRADE AND 4" TO 6" CONCRETE DRIVEWAY WITH 4" STABILIZED SUBGRADE ~ 95% COMPACTION (MODIFIED PROCTOR) WITH LBR 40 BETWEEN EDGE OF ROADWAY AND R/W LINE.
2. FOR OTHER TYPE CURBS, DIMENSIONS MAY BE ADJUSTED TO FIT. IF NECESSARY, REFER TO F.D.O.T. INDEX DETAILS.
3. DRIVEWAYS WITHIN PROPERTY BOUNDARY SHALL PROVIDE A MINIMUM OF 2 PARKING SPACES.
4. TYPICAL DRIVEWAY SECTIONS ARE TO BE 12' WIDE MINIMUM.

TYPE I CURB CUT DRIVEWAY FOR COUNTY TYPE "B" LAYBACK CURBS.



REVISED SEPT. 15, 2009

TYPICAL DRIVEWAY CONNECTION STANDARDS FOR NEW SUBDIVISION (ROADSIDE SWALES) ROADWAY CONDITIONS



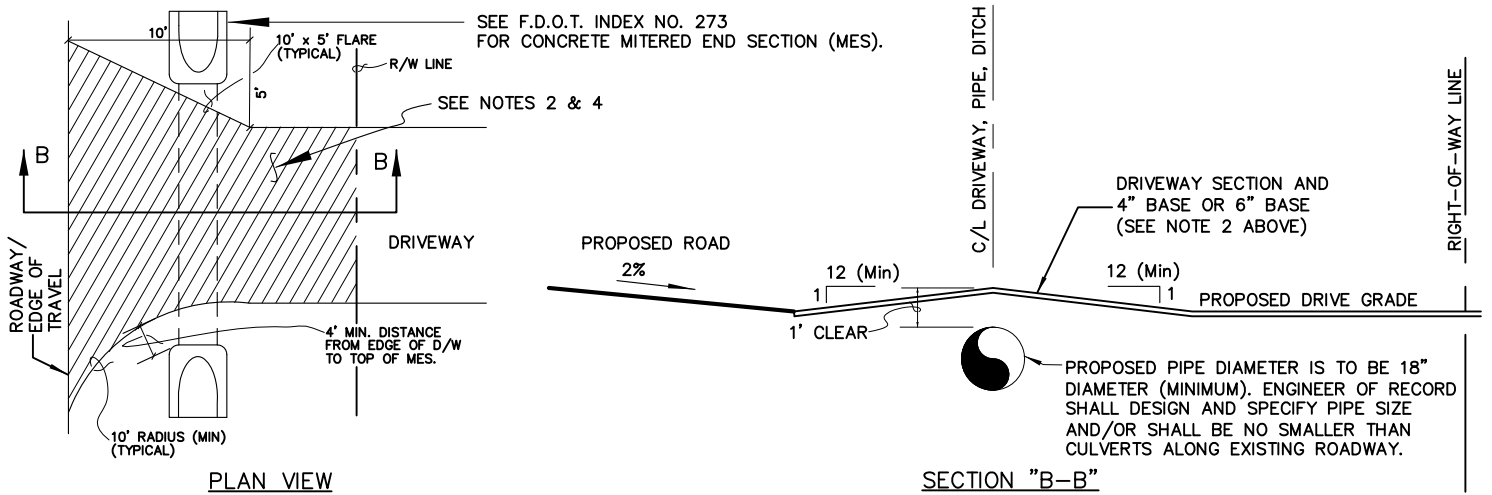
NOTES:

1. ALL MATERIALS AND LABOR FOR INSTALLATION WILL BE THE RESPONSIBILITY OF THE PROPERTY OWNER.
2. DRIVEWAYS ABUTTING PAVED ROADS SHALL BE 1-1/2" ASPHALT WITH 6" STABILIZED SUBGRADE OR 4" TO 6" CONCRETE WITH 4" STABILIZED SUBGRADE ~ 95% COMPACTION (MODIFIED PROCTOR) WITH LBR 40 BETWEEN EDGE OF ROADWAY AND R/W LINE.
3. IF NECESSARY, REFER TO F.D.O.T. INDEX DETAILS AS REFERENCED BELOW.
4. RADIUS OR FLARE IS ACCEPTABLE FOR TYPE III CONNECTIONS.
5. DRIVEWAYS WITHIN PROPERTY BOUNDARY SHALL PROVIDE A MINIMUM OF 2 PARKING SPACES.
6. TYPICAL DRIVEWAY SECTIONS ARE TO BE 12' WIDE MINIMUM.

NOTE:

TYPE III-A CROSS PIPE (CULVERT) DRIVEWAY

TYPE IIIB DRIVEWAY W/ CONCRETE HEADWALLS MAY BE USED IN SPECIAL CASES AS APPROVED BY THE PUBLIC WORKS / DEVELOPMENT REVIEW DEPARTMENT.



TYPE IV SPECIAL DRIVEWAY CONNECTION

TYPE IV-A REQUIRES A F.D.O.T. CONNECTION PERMIT (PROVIDE APPROVED F.D.O.T. PERMIT TO OBTAIN COUNTY APPROVAL). REFER TO INDEX NO. 515 AND CONTACT F.D.O.T. AT (850) 981-3000. MAY REQUIRE PLANS PREPARED BY A FLORIDA REGISTERED PROFESSIONAL ENGINEER (P.E.).

TYPE IV-B SPECIAL INNOVATIVE CONNECTION AS DESIGNED BY A FLORIDA REGISTERED PROFESSIONAL ENGINEER (P.E.) AND AS APPROVED BY THE APPROPRIATE PUBLIC WORKS / DEVELOPMENT REVIEW STAFF. ATTACH PLAN FOR REVIEW.

REVISED SEPT. 15, 2009